



tempio[®] SYSTEMS

tempio[®] SYSTEMS

VENTILATED FAÇADE FACHADA VENTILADA

TEMPIO SYSTEMS

Ventilated façades comprise a building system that has consolidated its place among architects and builders, in particular for its high quality, aesthetic possibilities and its undisputed thermal and acoustic insulation benefits.

A ventilated façade is made up of a supporting wall, an insulating layer that is either anchored to it or sprayed on it, and a facing layer joined to the building using an anchoring structure, generally in aluminium. In this system, an air chamber is created between the insulation and the facing, and the "chimney effect" provides for an efficient natural ventilation system, maintaining the insulation dry and achieving significant energy savings.

La fachada ventilada es un sistema constructivo que se ha ido consolidando con gran aceptación entre arquitectos y constructores, sobre todo por su elevada calidad, posibilidades estéticas y por sus indiscutibles ventajas de aislamiento térmico y acústico.














El sistema de fachada ventilada consta del muro soporte, una capa de aislante anclado o proyectado sobre el soporte y por una capa de revestimiento vinculada al edificio mediante una estructura de anclaje, generalmente de aluminio. Entre el aislante y el revestimiento se crea de este modo una cámara de aire que, por el "efecto chimenea", activa una eficaz ventilación natural, manteniendo el aislamiento seco y consiguiendo de esta forma un gran ahorro en el consumo energético.





tempio®[projects] Jan Dang Library, South Korea

TEMPIO VENTILATED FAÇADE ADVANTAGES VENTAJAS DE LA FACHADA VENTILADA TEMPIO

- | | |
|---|--|
|  _Energetic costs 25-40% reduction
_Reducción del gasto energético entre el 25-40% |  _0% wastewater discharged
_0% de aguas residuales vertidas |
|  _Increased thermal and acoustic comfort
_Aumento del confort térmico y acústico |  _Low CO ₂ emissions
_Mínima emisión de CO ₂ |
|  _No water condensation and waterproofness
_Eliminación del agua condensada e impermeabilidad |  _Waste material recycling
_Reciclaje del material sobrante |
|  _Passive ventilation and thermal isolation
_Ventilación pasiva y aislación térmica |  _Direct application without creating debris
_Aplicación directa sin crear escombros |
|  _Double wall
_Doble pared |  _Piece by piece replaceable system
_Sistema reemplazable pieza por pieza |
|  _Self-cleaning with rainwater
_Autolimpiable con agua de lluvia |  _Revaluation of property
_Revalorización del inmueble |
|  _Resistant to the passage of time
_Resistente al paso del tiempo |  _Hidden crevices and conductions
_Grietas y paso de conducciones ocultas |



tempio®[projects] Cementos Benidorm, Spain

The ceramic material is extruded porcelain stoneware which is coloured throughout the whole body, with a natural or glazed finish in a wide range of colours, fired at a temperature of 1200°C.

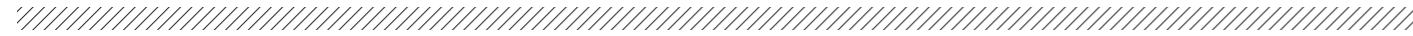
Leading European laboratories have certified the physical characteristics of this material:

- Frost-resistant material pursuant to standard UNE EN 10545 withstanding 100 frost/defrost cycles.
- Non-combustible material.
- High impact resistance >0,75 pursuant to standard UNE EN 10545.
- Non-variable material, easy to clean.

En cuanto al material cerámico, se trata de un gres porcelánico extruído color en masa, con acabado natural o esmaltado en una amplia gama de colores y cocido a una temperatura de 1200°C.

Los mejores laboratorios europeos certifican las cualidades físicas del material:

- Material resistente al hielo según norma UNE EN 10545 soportando 100 ciclos de hielo/deshielo.
- Se trata de un material no combustible.
- Importante resistencia a golpes >0,75 según norma UNE EN 10545.
- Material invariable y fácil de limpiar.



FK-16
FK-20



FK-L 1/16
FK-L 1/20



FK-1BA 5/16



FK-2B 5/16



FK-L 2/16



FK-L 3/16



FK-1BB 5/16



FK-L 59/16



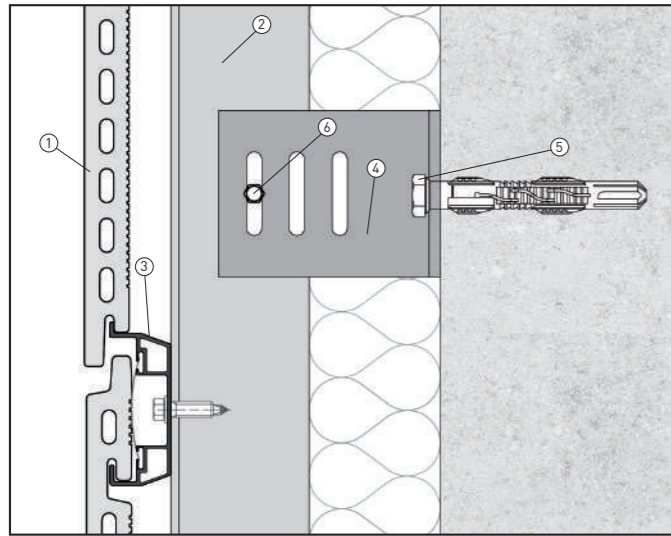
FK-L 4/16



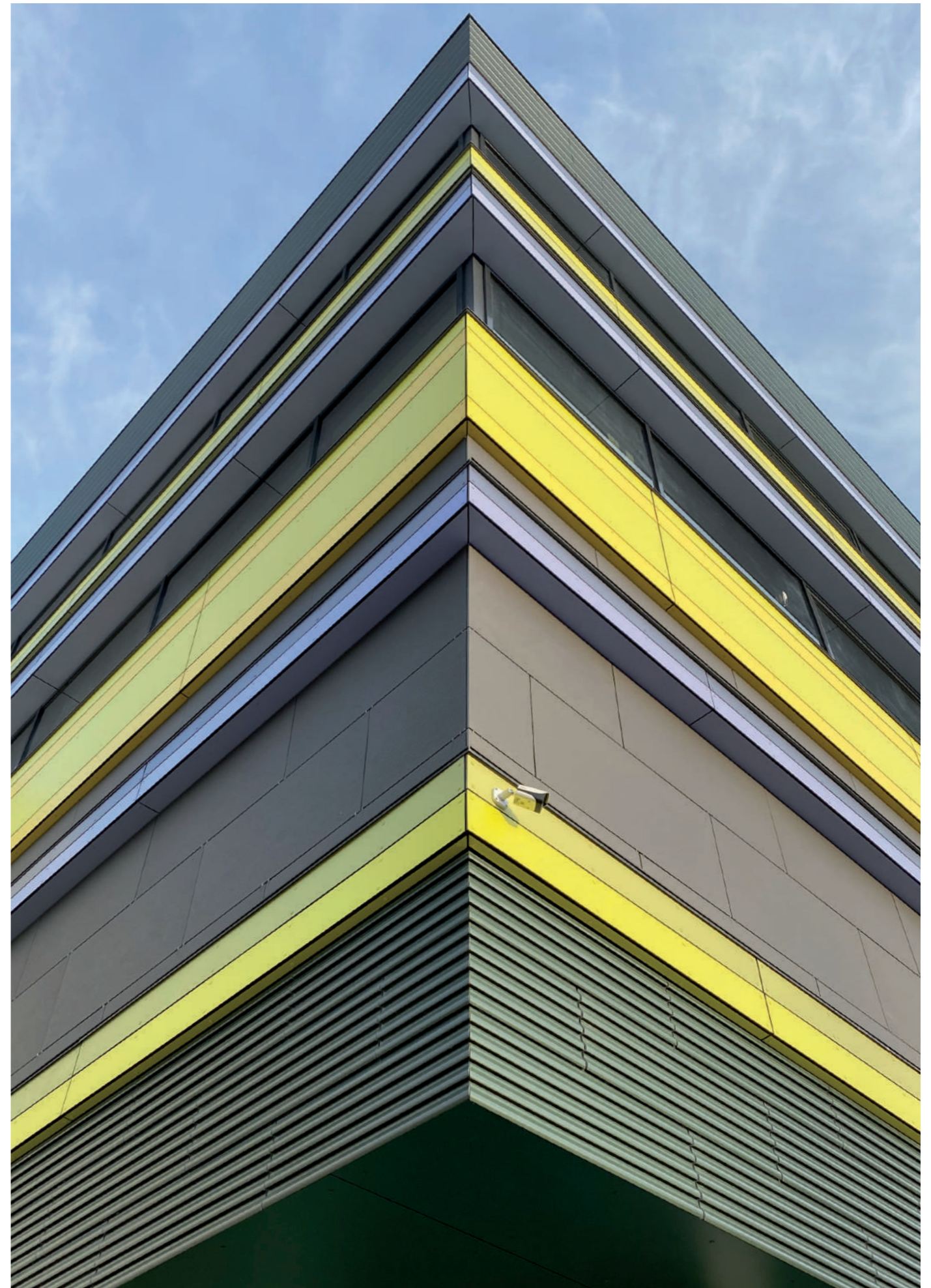
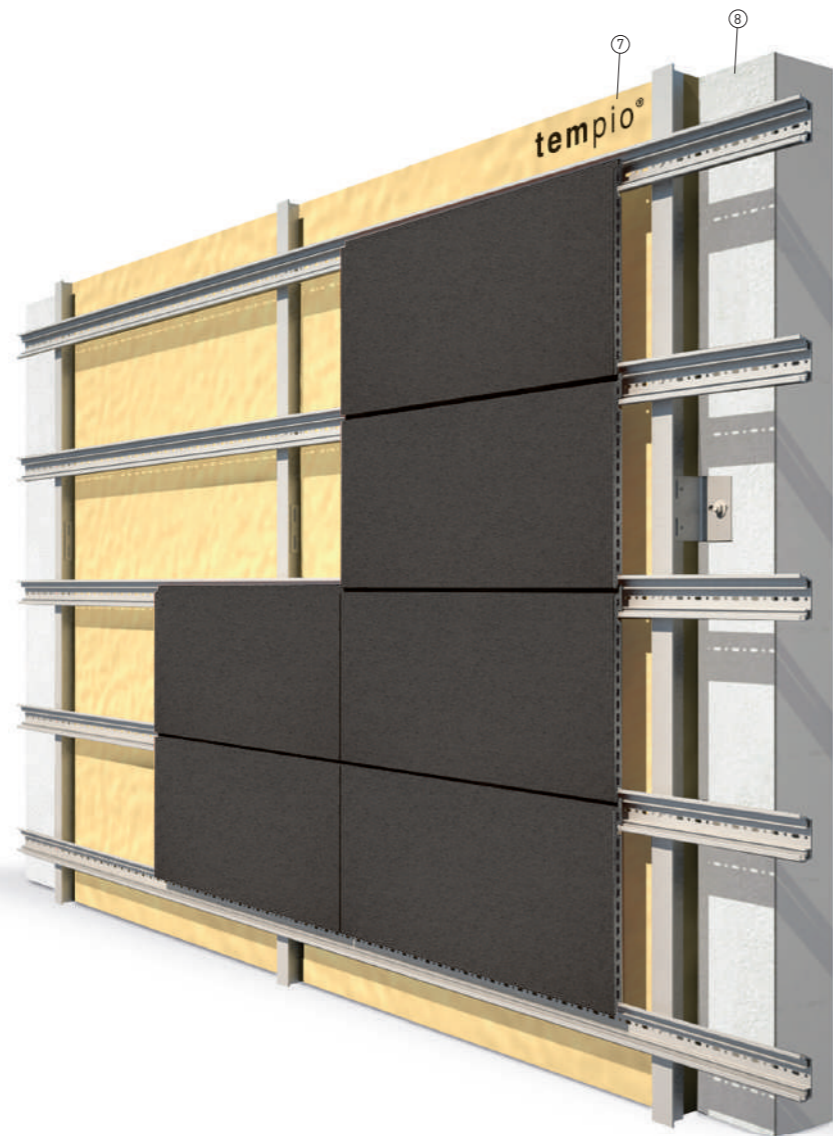
FK-O 8/20

Height module/inch Alto módulo/mm	FK-16	FK-20	FK-L 1/16	FK-L 1/20	FK-L 2/16	FK-L 3/16	FK-L 4/16	FK-O 8/20	FK-L 59/16	FK-1BA 5/16	FK-1BB 5/16	FK-2B 5/16
200 - 7.87"	■	■	■						■			
240 - 9.44"	■											
250 - 9.84"	■											
280 - 11.02"	■											
300 - 11.81"	■	■	■	■	■		■	■		■	■	■
310 - 12.20"		■										
315 - 12.40"	■											
340 - 13.38"	■											
350 - 13.78"	■	■	■				■					
380 - 14.96"	■											
400 - 15.74"	■	■	■	■			■					
450 - 17.71"	■											
500 - 19.68"	■	■	■									
510 - 20.07"	■											
545 - 21.45"		■	■									
600 - 23.62"		■										
length piece/mm largo pieza/mm	< 1200	< 1500	< 1200	< 1500	< 1200	< 1200	< 1200	< 1500	< 1200	< 1200	< 1200	< 1200

FK PERSPECTIVE | PERSPECTIVA FK



- | | |
|---|--|
| 1_ Tempio tile
Pieza Tempio | 5_ Anchorage
Anclaje |
| 2_ Vertical T profile
Perfil T vertical | 6_ Fixet to sliding point
Fijación corredera |
| 3_ Horizontal profile
Perfil horizontal | 7_ Insulating layer
Aislante |
| 4_ Bracket
Ménsula | 8_ Termination profile
Perfil de terminación |





PROJECT
Original Sokos Hotel

LOCATION
Kupittaa, Tuku, Finland



ARCHITECT
Haroma & Partners Oy

PIECE



FK-16

COLOURS

-  Black Seattle E1185
-  Green Glasgow EB3470





PROJECT
M Carnegie Building

LOCATION
316 Neerim Road Carnegie, Melbourne

ARCHITECT
T-A Square Architects

PIECE

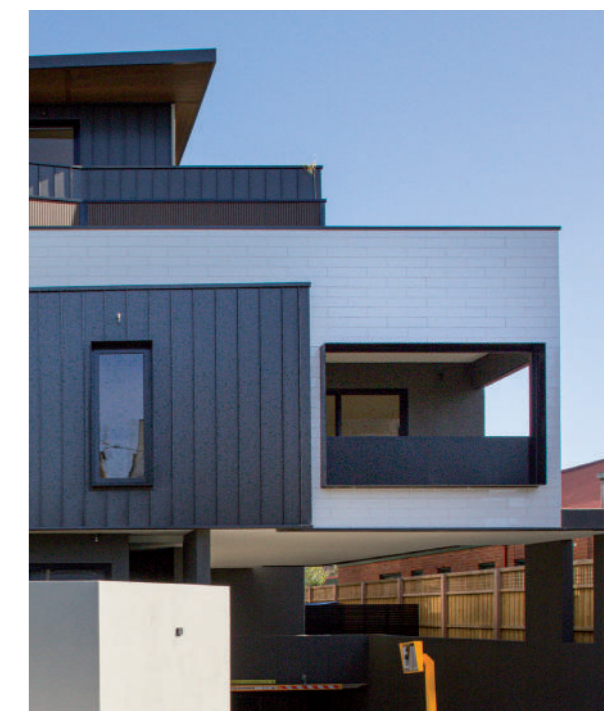


FK-16

COLOURS



White Madrid EM2220





PROJECT
Just Järvenpään Sairaala

LOCATION
Järvenpää, Finland

ARCHITECT
UKI Arkkitehdit

PIECE



FK-16

COLOURS



Red R25-19





PROJECT
Heka Teerisuontie 27

LOCATION
Malmi, Helsinki, Finland





ARCHITECT
Eeva Kilpiö / A6

PIECE



FK-16

COLOURS

	Red R25-25
	Brown BR2-08
	Grey GR1-10
	Grey GR2-20

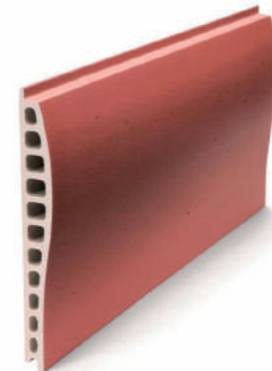




FS-20 | FS-24 | FS-28



FS-L 2/20 | FS-L2/24 | FS-L2/28



FS-D 24



FS-L 4/24



FS-T 7/28



FS-D 5/23



FS-L 5/28



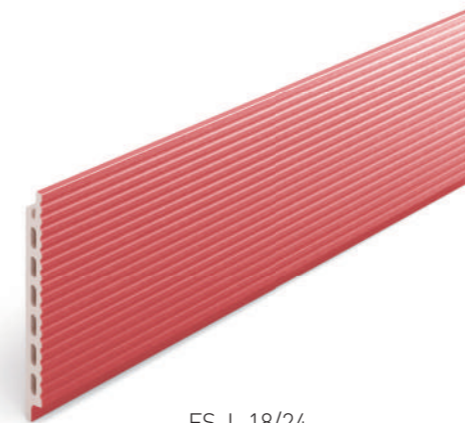
FS-L 7/28



FS-LP 2/28



FS-2B/20 | FS-2B-28



FS-L 18/24



FS-L 3/28

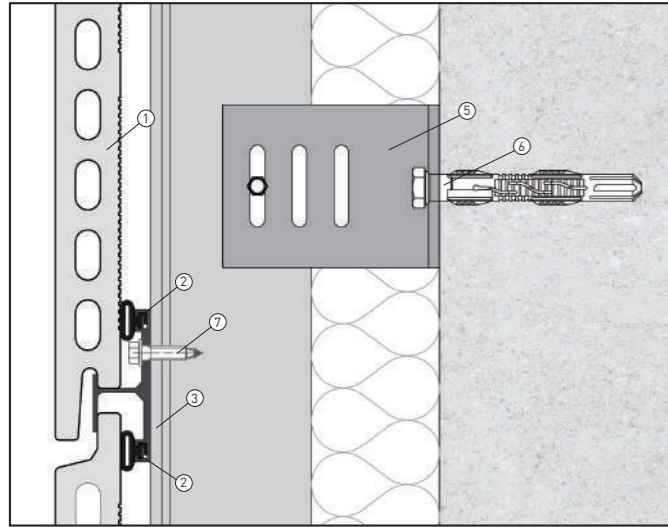


FS-LP 3/28

Height module/inch Alto módulo/mm	FS-20	FS-24	FS-28	FS-L 2/20	FS-L 2/24	FS-L 2/28	FS-T 7/28	FS-D 5/23	FS-LP 2/28	FS-2B/20	FS-2B/28	FS-L 3/28	FS-LP 3/28	FS-D 24	FS-L 4/24	FS-L 5/28	FS-L 7/28
200 - 7.87"	■	■	■														
225 - 8.86"	■																
250 - 9.84"	■	■	■														
280 - 11.02"	■	■	■	■	■	■	■	■	■	■	■						
300 - 11.81"	■	■	■	■	■	■	■	■	■	■	■			■			
350 - 13.78"				■													
375 - 14.76"	■																
400 - 15.74"	■	■	■									■	■				■
450 - 17.71"	■																
500 - 19.68"	■	■		■												■	
600 - 23.622"			■													■	
length piece/mm largo pieza/mm	< 1500	< 1500	< 1500	< 1500	< 1500	< 1500	< 1500	< 1500	< 1500	< 1500	< 1500	< 1500	< 1500	< 1500	< 1500	< 1500	< 1500
weight/peso - kg/m²	33	42	48	32	39	48	37	20	42	39	52	45	42	38.5	40	45.5	44

FS SYSTEM

FS PERSPECTIVE | PERSPECTIVA FS



- | | |
|---|---|
| 1_ Tempio tile
Pieza Tempio | 5_ Bracket
Ménsula |
| 2_ Clip
Grapa | 6_ Anchorage
Anclaje |
| 3_ Main T profile
Peril en T | 7_ Self screwing
Tornillo autoroscante |
| 4_ Vertical joint profile
Perfil vertical de junta | 8_ Insulating layer
Aislante |



tempio®[projects] KTNG, Busan City, South Korea



PROJECT
200 George Street

LOCATION
Sidney, Australia

ARCHITECT
FJMT Sydney

PIECE



FS-L 5/30

COLOURS



White W2-07





PROJECT
Songdo Convensia





LOCATION
Central-ro, Yeonsu-gu, Incheon, South Korea

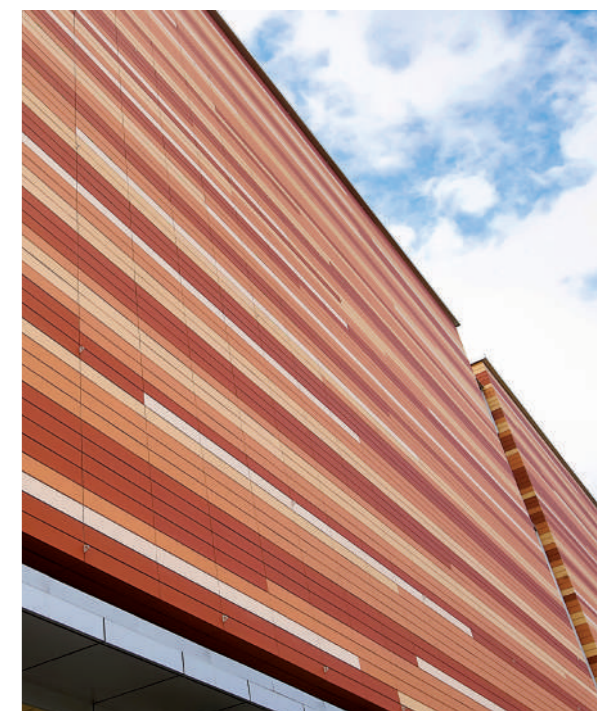
PIECE



FS-20

COLOURS

-  White W2-07
-  Yellow Y00-05
-  Red R05-05
-  Red R25-25





PROJECT
Gwangjin Police





LOCATION
Central-ro, Yeosu-gu, Incheon,
Republic of Korea

PIECE



FS-20

COLOURS

	White W2-07
	Yellow Y00-05
	Red R05-05
	Red R25-25





PROJECT
FITI Testing & Research Institute

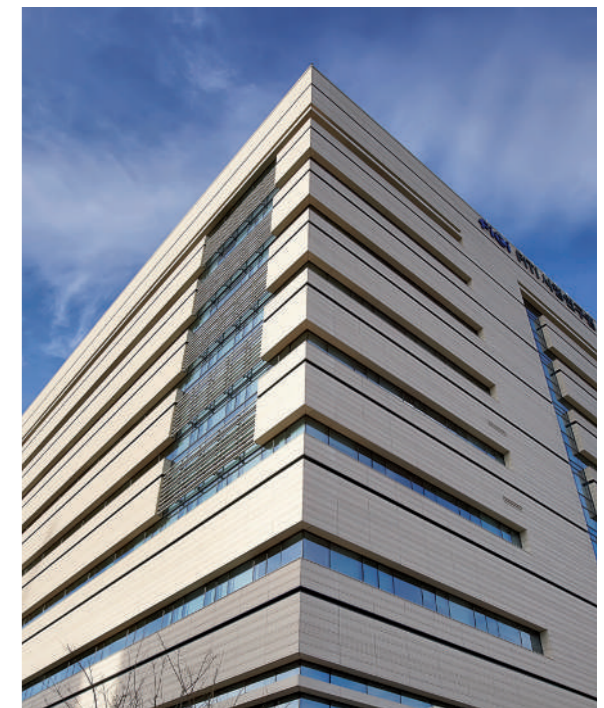
LOCATION
Gangseo-gu, Seoul, Republic of Korea

PIECE

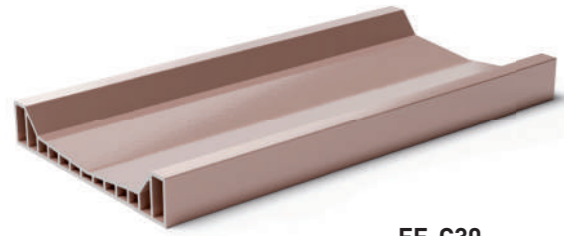


FS-22-L

COLOURS



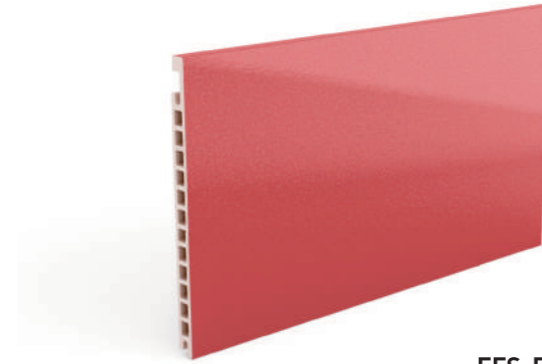
HIGH PROFILE PIECES



FF-C30



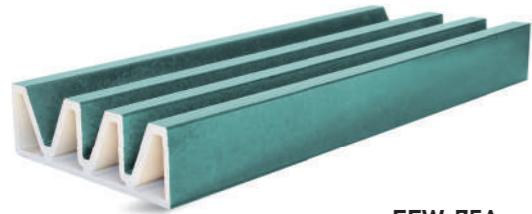
FF-T 1/60



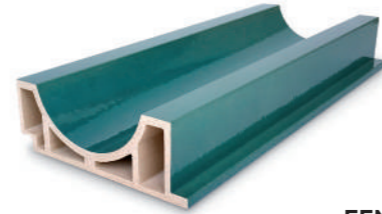
FFS-ESP-28



FF-D 5/23.1



FFW-75A



FFNr66



FF-D 5/23



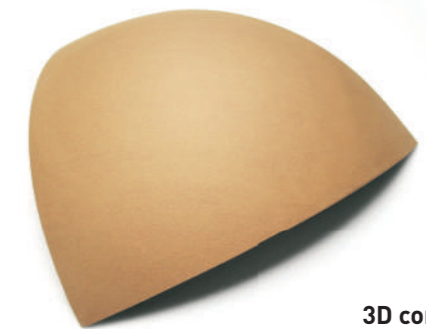
FF-E 215X197



FF3D T



FF-1B



3D corner



FF-K 45,5/R500



FF-K 30/R300



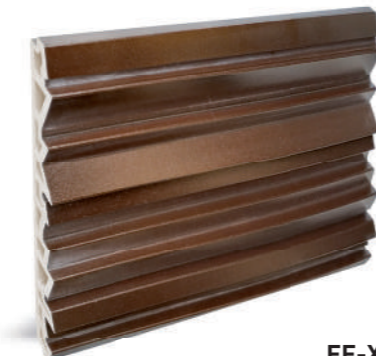
Soft



Tokyo



FF-C 9/65



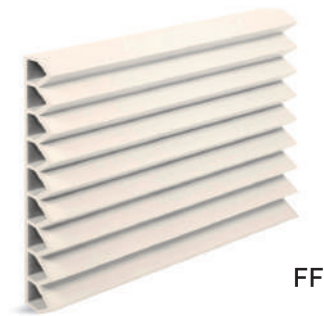
FF-X44



PROJECT
Justice House

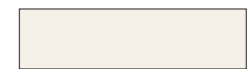
LOCATION
Zugdidi, Georgia

PIECE



FF-C9/65

COLOURS



White Formentera EB3210





PROJECT
D-Tower

LOCATION
Songdo, Korea

ARCHITECT
Samoo Architects & Engineers

PIECE

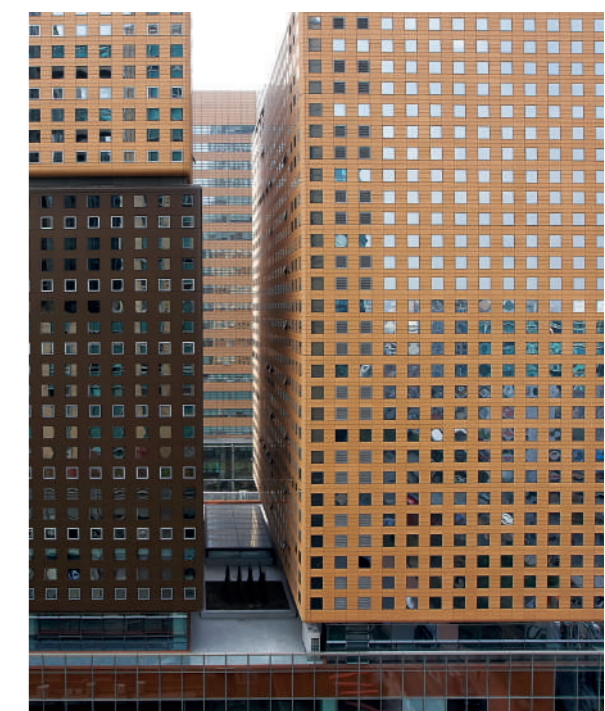


3D Corner

COLOURS



Yellow Y125-15



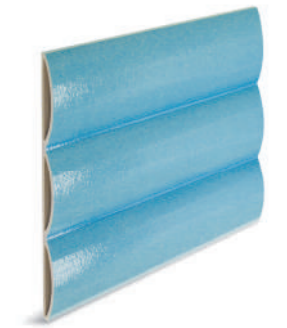


PROJECT
22 Viviendas

LOCATION
Cartagena, Spain

ARCHITECT
Martín Lejarraga Arquitectos

PIECE



FF-0 3/40

COLOURS



Blue Volga EB3315



BAGUETTES

TEMPIO BAGUETTES

These pieces are designed for multiple applications, as latticework to deflect light or hide spaces in washrooms or stairways, for use as handrails, pergolas or separation of room spaces indoors and terrace spaces outdoors. They come in sizes up to 1.80 m in both natural and glazed colours.

El diseño de estas piezas permite múltiples aplicaciones, desde su uso como celosía para tamizar la luz y ocultar huecos en tenderos o escaleras, hasta su utilización como barandilla, pérgolas o separación de ambientes tanto de interior como de exterior. Se fabrican hasta 1,80 m en colores naturales y esmaltados.





tempio®[projects] Midtbyens Gimnasium, Chungnam, South Korea

TEMPIO BAGUETTES ADVANTAGES

VENTAJAS DE LAS BAGUETTES DE TEMPIO

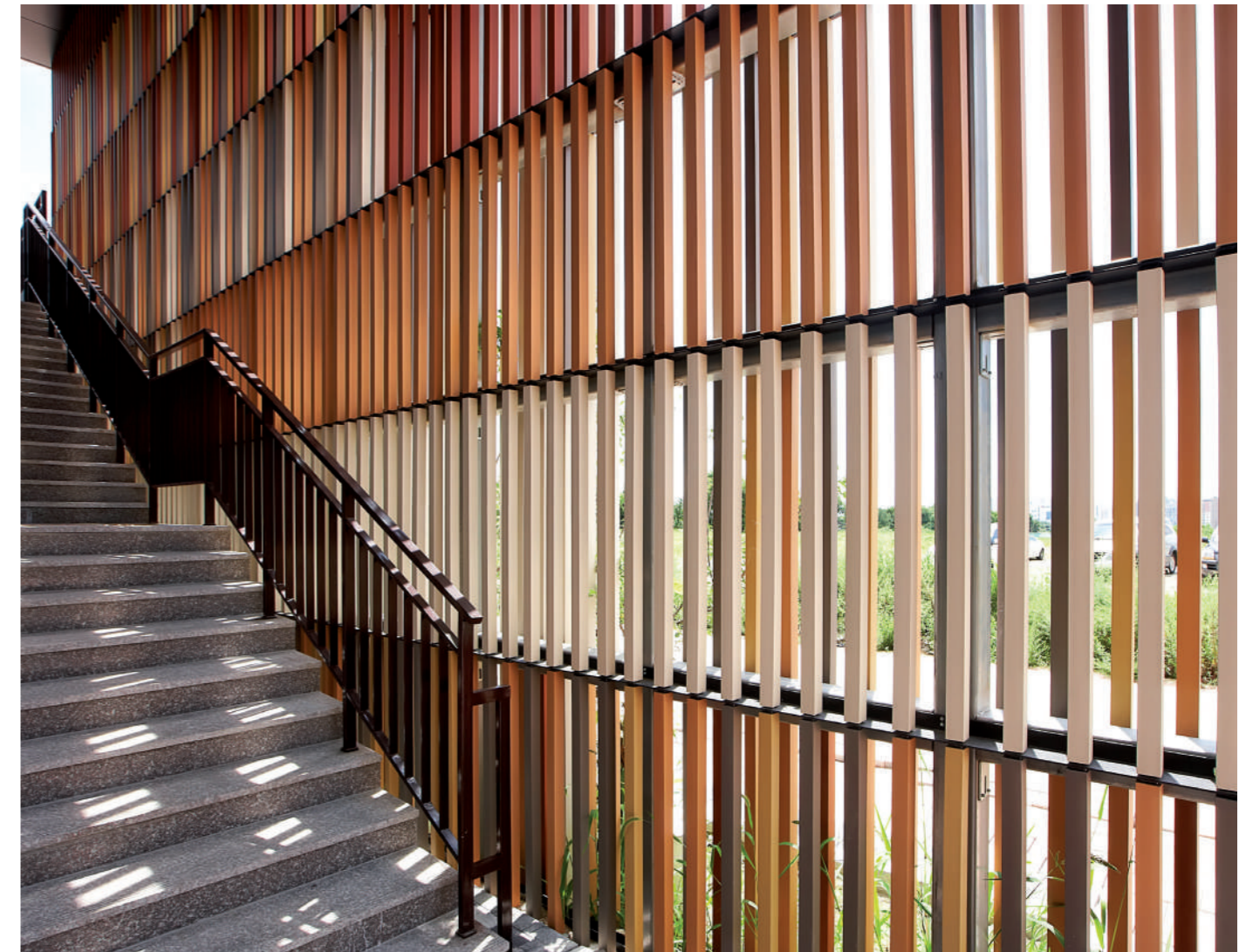
EXTERIOR APPLICATION | APLICACIÓN EXTERIOR

- _Solar shading_Protección solar
- _Horizontal and vertical orientation_Orientación vertical y horizontal
- _Suitable for any building size_Apto para cualquier tamaño de edificio
- _Venetian blind slats with ceramics_Celosía con lamas de cerámica
- _Window sill and wall copings_Alfeizares de ventanas y coronación de paredes
- _Profiles with hollow chamfers_Perfiles con cámaras huecas
- _Customized designed substructure_Subestructura especialmente diseñada

- _Customized pieces_Personalización de piezas
- _Wide variety of natural terracotta and glazed colours with gloss or matt finish. On request, other finishing colors can be produced_Gran variedad de colores naturales y esmaltados en brillo o mate. También fabricamos colores bajo demanda.

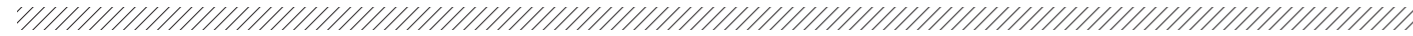
INDOOR APPLICATION | APLICACIÓN INTERIOR

- _Ambient Separation_Separación de ambientes
- _Coating for interior walls and ceilings_Revestimiento de techos y paredes interiores
- _Ephemeral architecture_Arquitectura efímera



tempio®[projects] Cheonan March Avenue, Cheonan-si, Chungcheongnam-do

BAGUETTE SYSTEM



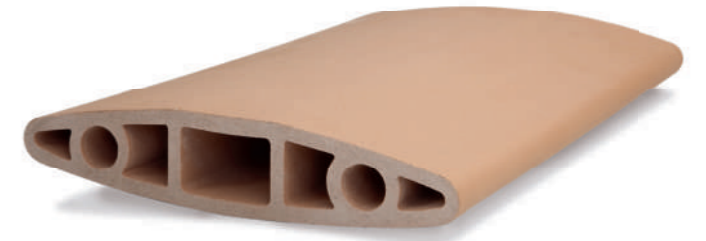
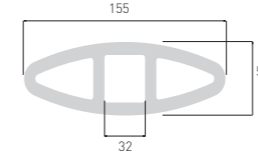
B-d50



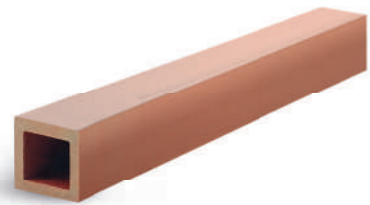
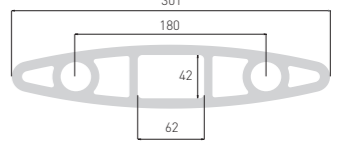
B-d110



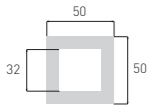
BO-160x50



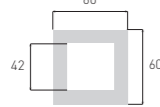
BO-300x62



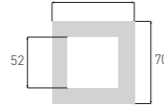
B-5x5



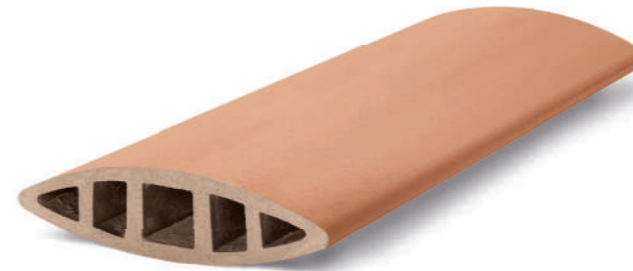
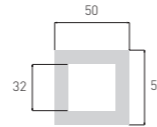
B-6x6



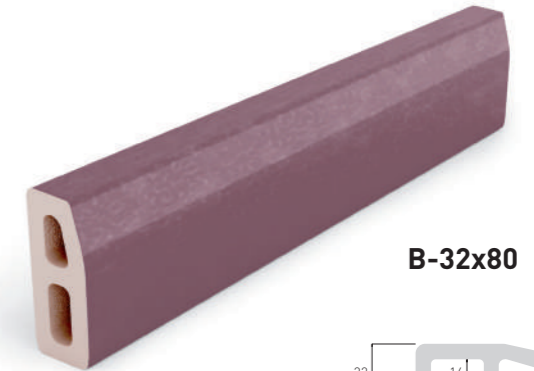
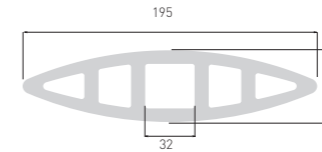
B-7x7



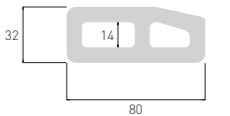
B-5x5 curvo



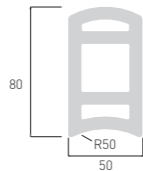
BO-200x50



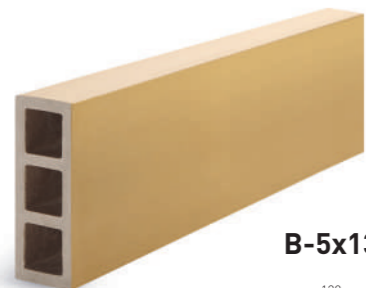
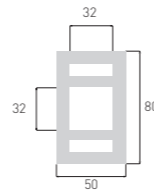
B-32x80



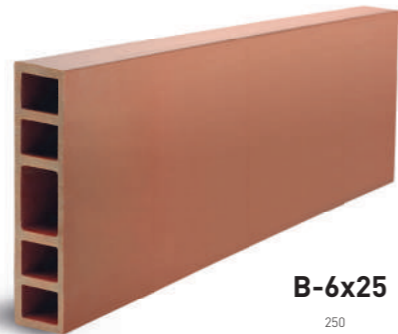
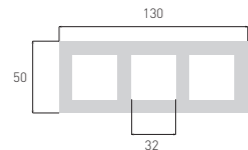
B-5x8 r50



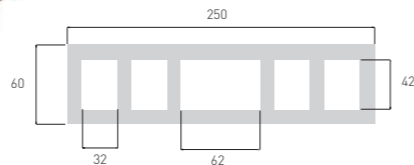
B-5x8



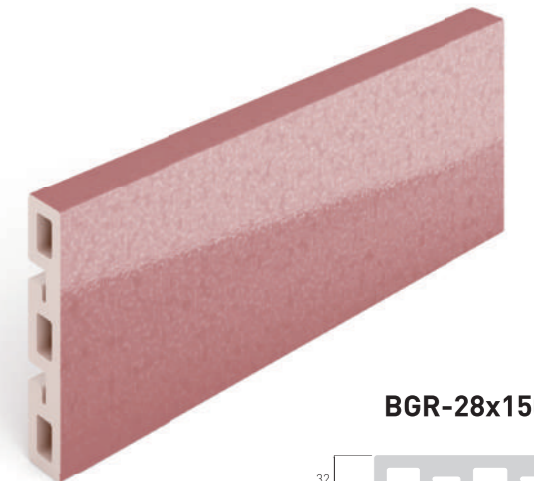
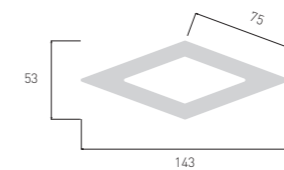
B-5x13



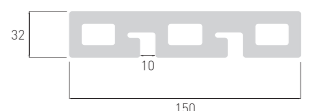
B-6x25



BR0-49x75



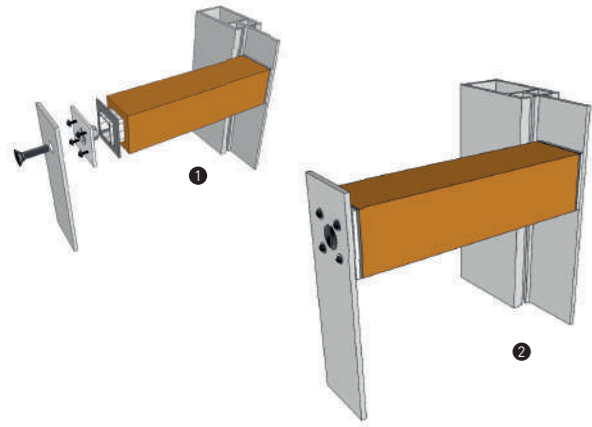
BGR-28x150



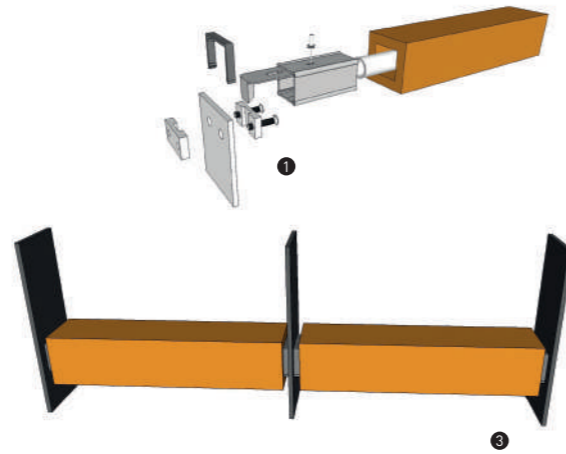
BAGUETTE SYSTEM

FIXATION DETAIL | DETALLE DE FIJACIÓN

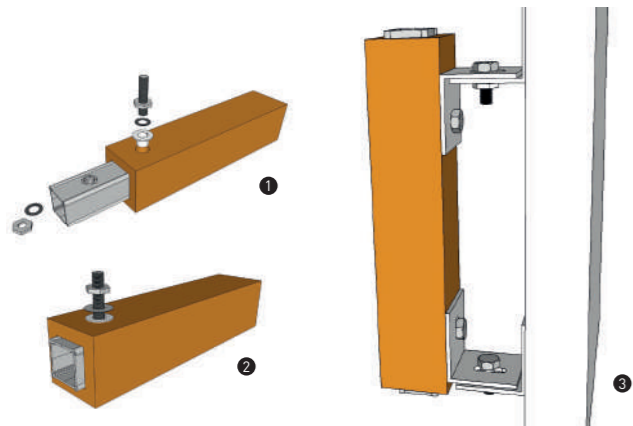
ANCHOR PLATE



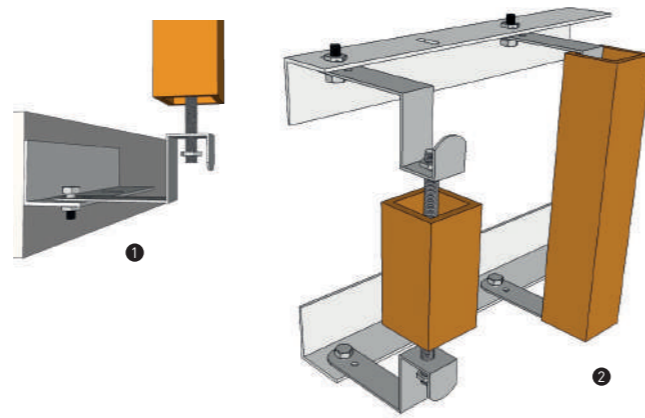
STANDARD



POP NUT

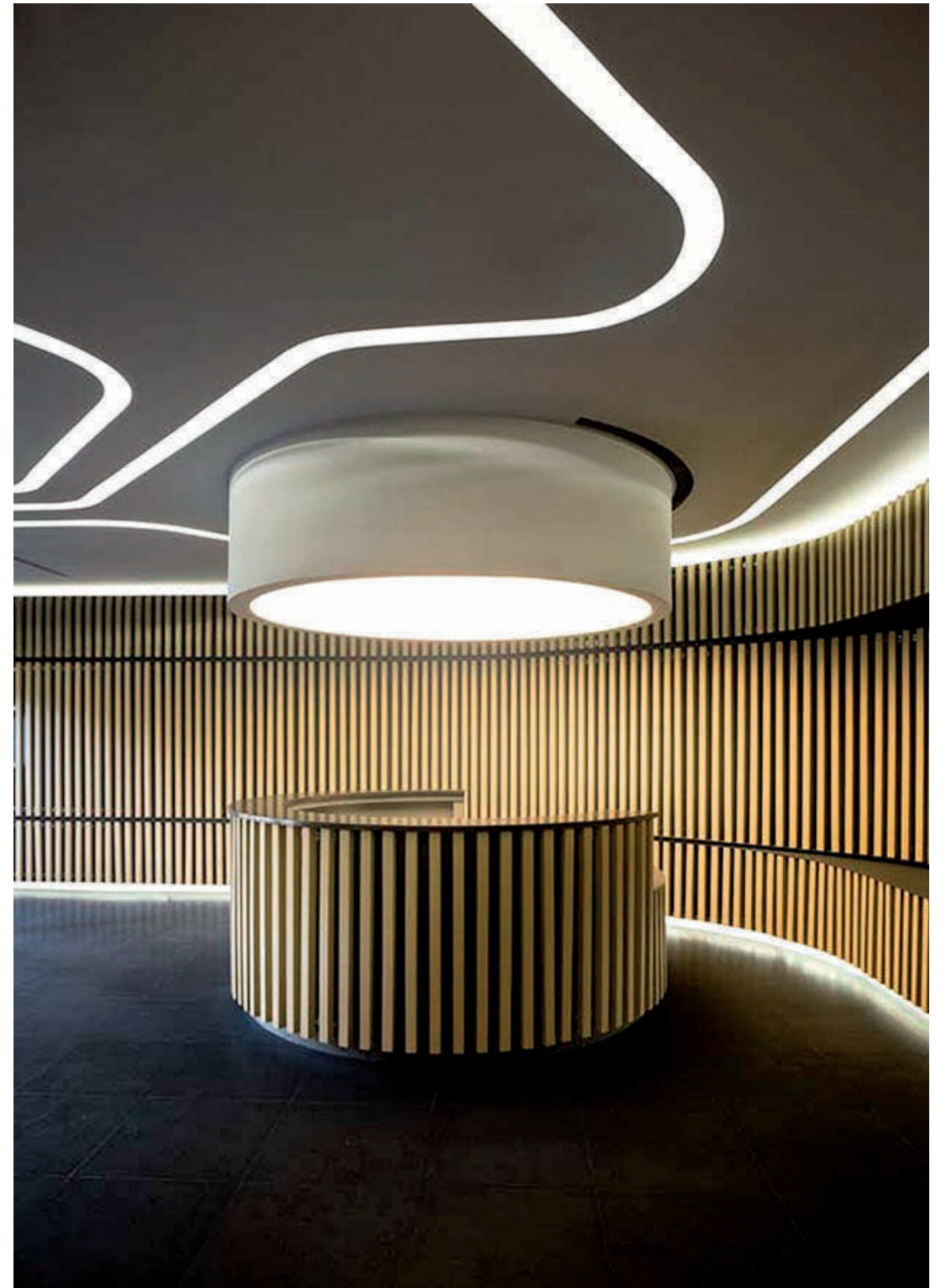


HOOK



Piece/Pieza	B-d50	B-d110	B-5x5	B-6x6	B-7x7	B-5x5 curvo	B-5x8 r50	B-5x8
length piece/largo pieza - mm	< 1800	< 1800	< 1800	< 1800	< 1800	< 800	< 1800	< 1800
weight/peso - kg/metro lineal	2.5	9.2	3.5	4	5	3.5	5.5	5.5

Piece/Pieza	B-5x13	B-6x25	B0-160x50	B0-300x62	B0-200x50	B-32x80	BR0-49x75	BGR-28x150
length piece/largo pieza - mm	< 1800	< 1800	< 1800	< 1800	< 1800	< 1800	< 1800	< 1500
weight/peso - kg/metro lineal	7.7	15	7.6	17.5	9.7	4.5	5.5	6

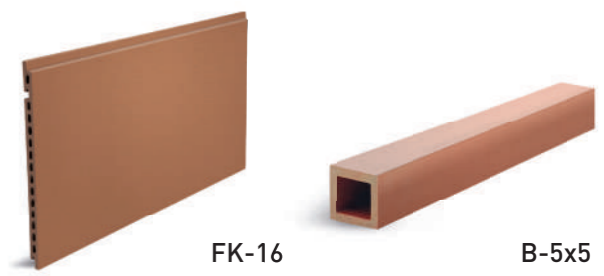


tempio® [projects] Príncipe de Vergara, Spain



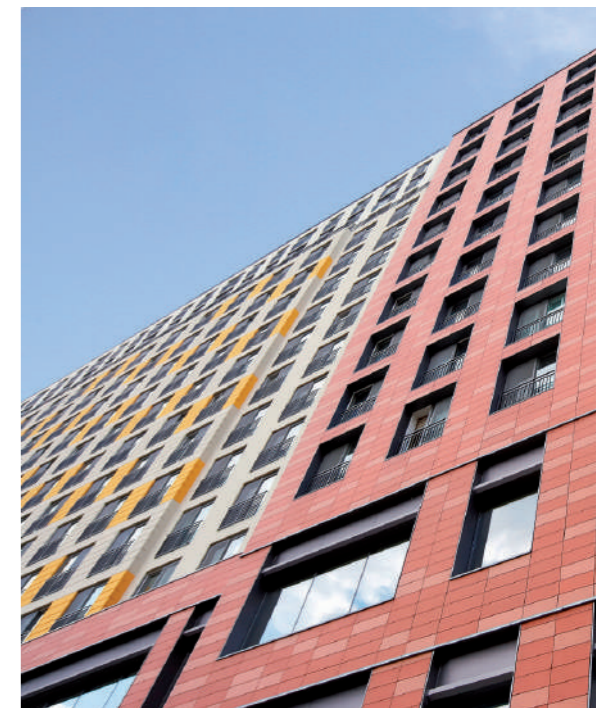
PROJECT
Mall L'Fort
LOCATION
Suwon, South Korea

PIECE



COLOURS

- Grey GR1-13
- Grey GR2-20
- Red R15-10
- Red R25-25





PROJECT
Midtbyens Gimnasium

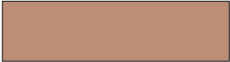



LOCATION
Viborg, Denmark

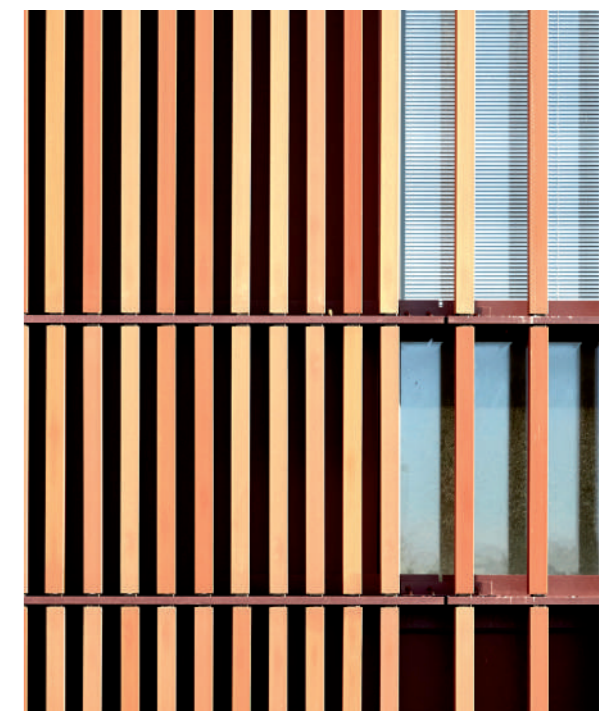
PIECE



B-5x5

COLOURS

-  Red R15-10
-  Red R25-19
-  Red R25-25
-  Brown BR02-08





PROJECT
St John Catholic Primary School

LOCATION
Shepherd's Bush, London W12 7QT, Reino Unido






ARCHITECT
DHP Property Consultant

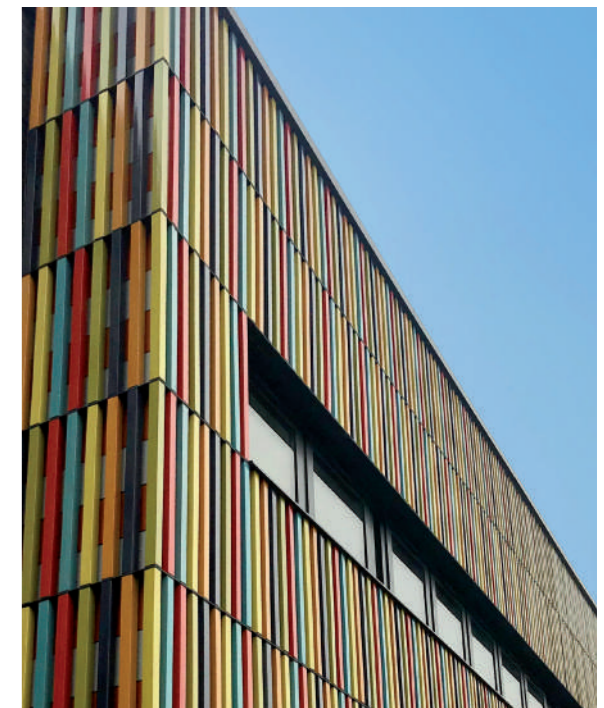
PIECE



B-5x5

COLOURS

-  Yellow Tanzania EB3660
-  Yellow Angola EB3680
-  Red Murano EB3550
-  Blue Volga EB3315
-  Green Surrey EB3460



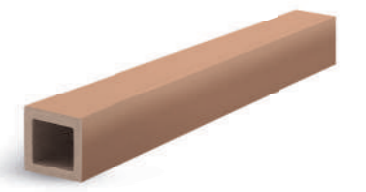


PROJECT
Monarch

LOCATION
Mosman, Australia

ARCHITECT
Bates Smart

PIECE

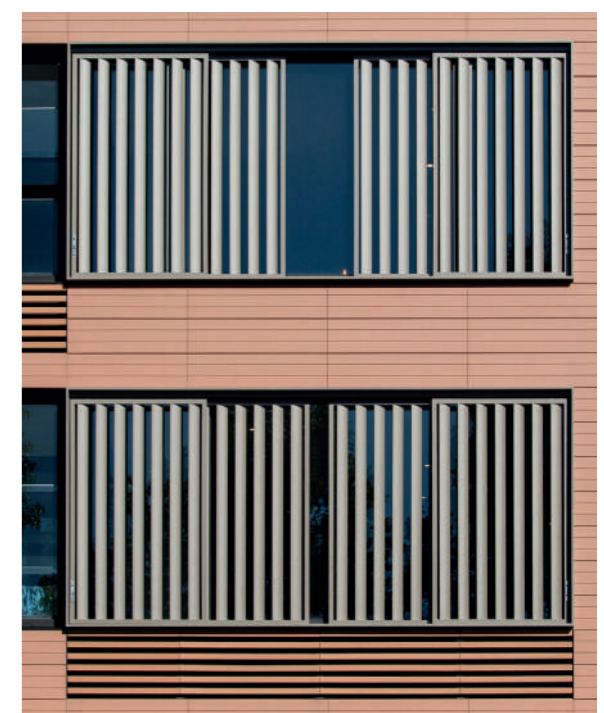


B-5x5

COLOURS



Red R05-05



COLOURS



TEMPIO NATURAL AND INKJET COLOURS

At Tempio we can create any colour to make your project design completely customisable. We can create a wide range of glazed, natural, glossy, satin or matte effect colours. The challenge is to create the perfect colour in our laboratory and ensure that it is optimally suited to the client's requirements, which we achieve with flying colours.

En Tempio podemos crear cualquier color para que el diseño de tu proyecto sea completamente personalizable. Podemos crear una amplia gama de colores esmaltados, naturales, brillantes, satinados o con efecto mate. El reto está en crear el color perfecto en nuestro laboratorio y conseguir que se adapte de forma óptima a lo que busca el cliente, algo que logramos con creces.

COLOURS

NATURAL COLOURS COLORES NATURALES



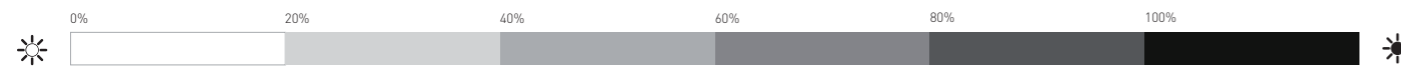
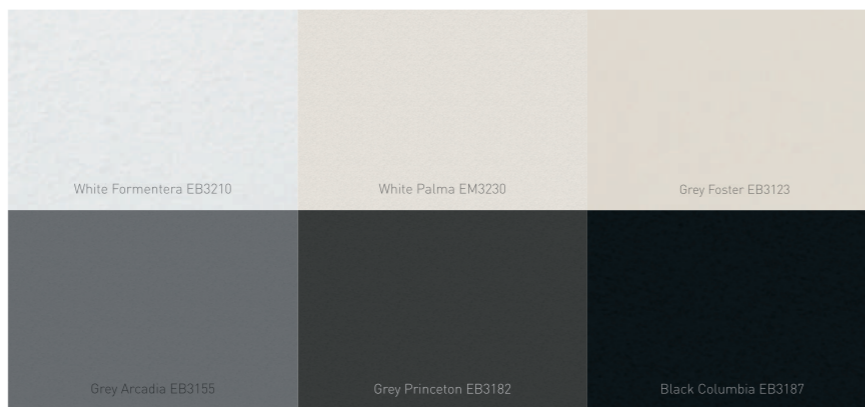
MAT ENAMEL ESMALTE MATE



SATIN ENAMEL ESMALTE SATINADO



GLOSS ENAMEL ESMALTE BRILLO



NEUTRAL GRADIENT SCALE
ESCALA DE COLORES NEUTROS



COLOUR SCALE
ESCALA DE COLOR

INKJET COLOURS



Amazonia Miel



Amazonia Café



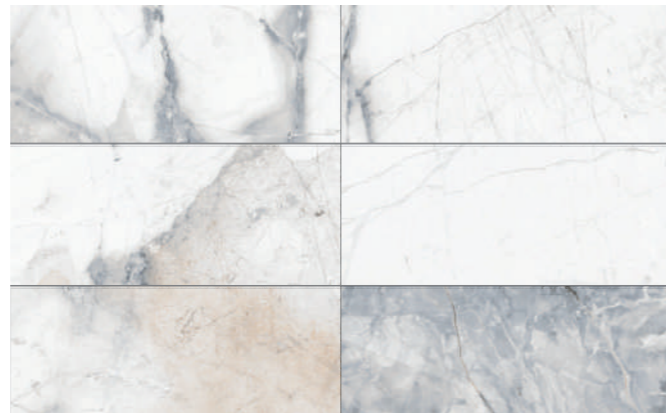
Travertino



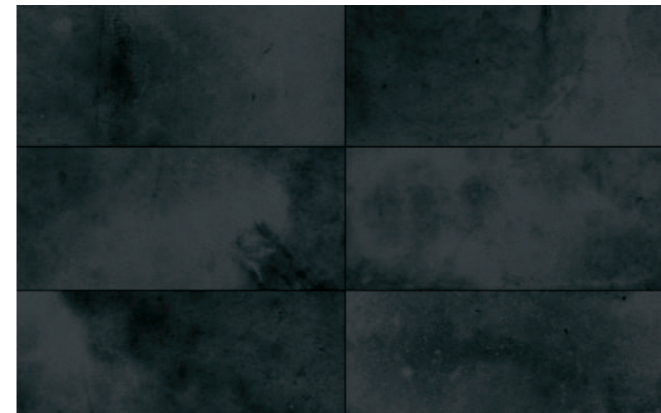
Sea Rock Caramel



Amazonia Canela



Calacatta Grey



Anthracite



Red FLamed



Woods Nordic



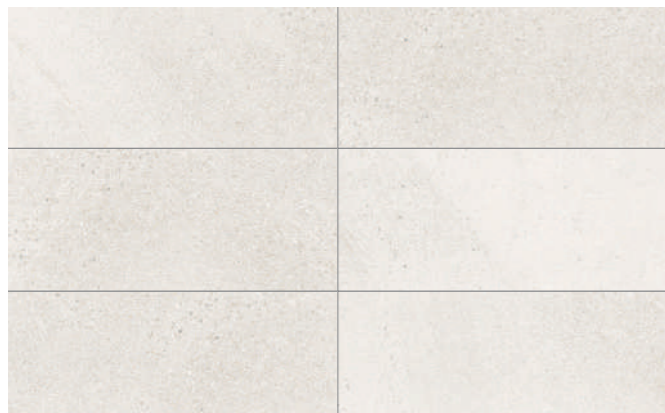
Woods Olivo



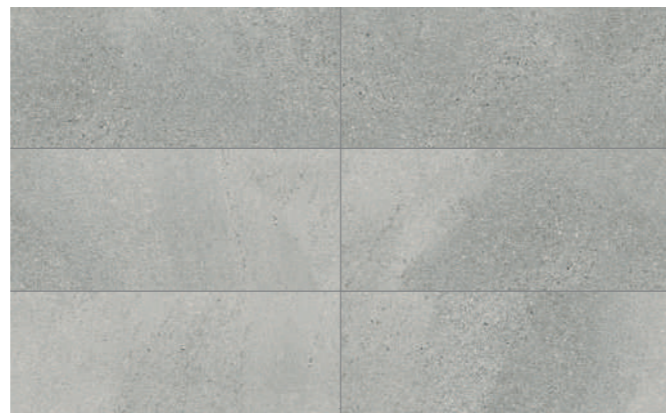
Canyon Cal



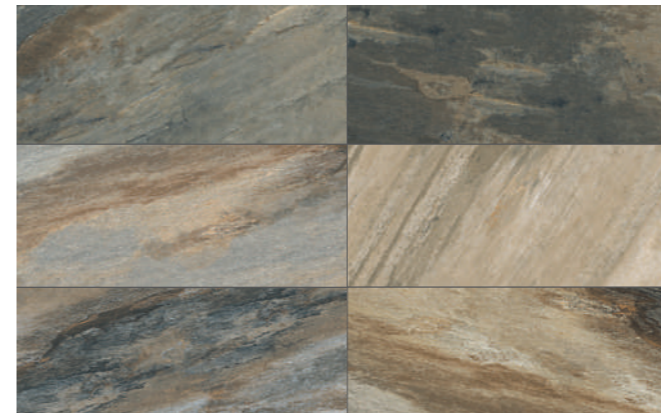
Canyon Creme



Stromboli Light



Stromboli Silver



Canyon Mix



EK1006 BLACK & WHITE



PROJECT
Grans Bryggeri

LOCATION
Suecia

ARCHITECT
Vision Architects

PIECE



FS-20

COLOURS



Red Flamed EK1005





PROJECT
Flynn Flats

LOCATION
Canada

ARCHITECT
Vision Architects

PIECE

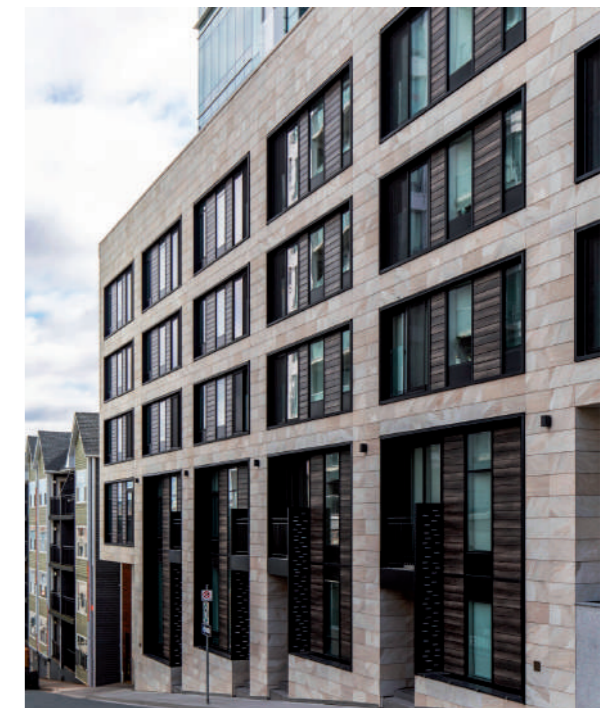


FS-16

COLOURS



Canyon Cal





PROJECT
The Dilon
LOCATION
Canada
ARCHITECT
Vision Architects

PIECE

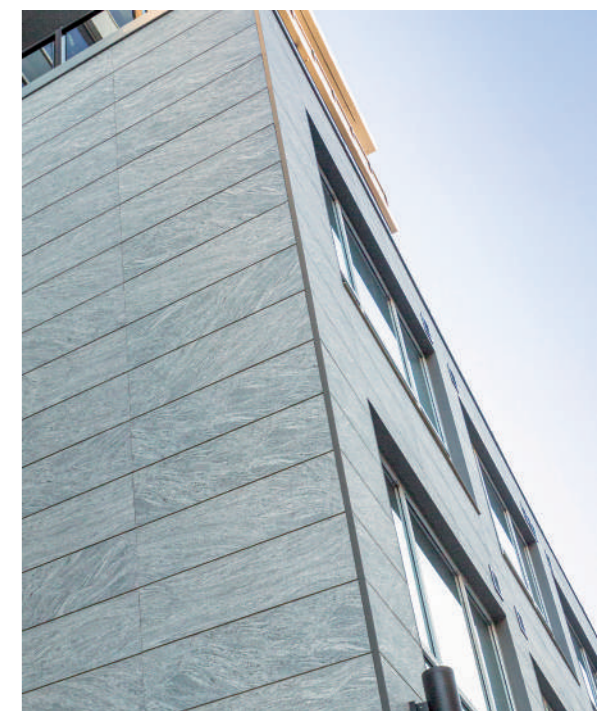


FS-16

COLOURS



Black & White EK1006





PROJECT
Monaghan

LOCATION
Canada

ARCHITECT
Vision Architects

PIECE

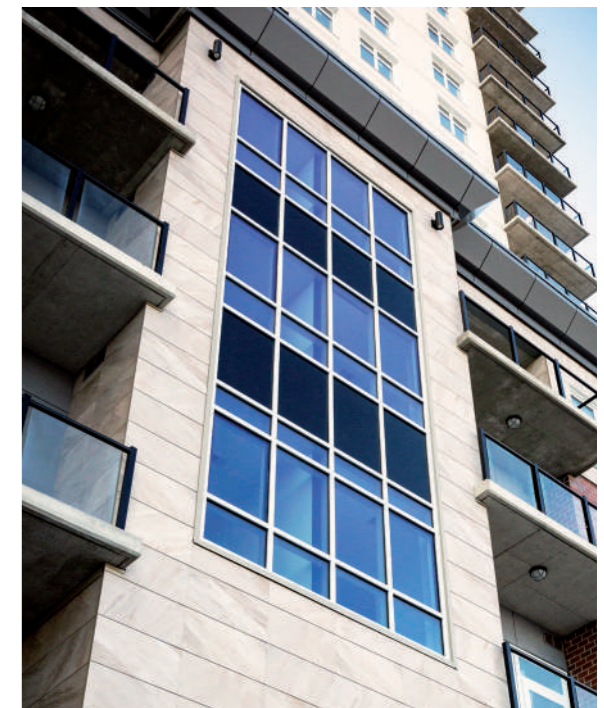


FS-16

COLOURS



Canyon Cal





PROJECT
Ed Data Company

LOCATION
Denmark

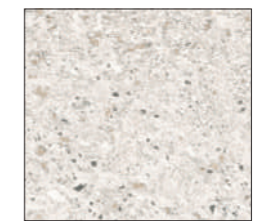
ARCHITECT
Vision Architects

PIECE

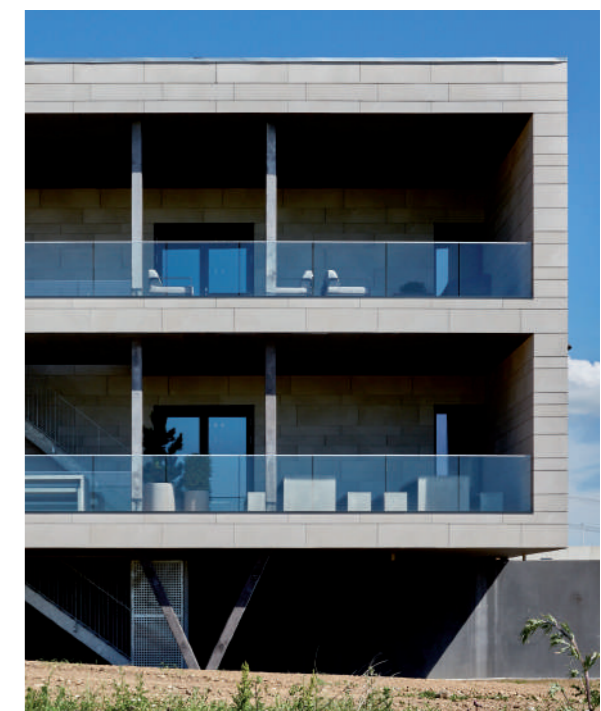


FS-16

COLOURS



Stromboli light





tempio® [projects] Saukonkanava, Helsinki, Finland.



CERÁMICA MAYOR, S.A.
 Partida Planet, s/n. 03510 Callosa d'En Sarrià (Alicante-España)
 T+34 965 881 175 | www.ceramicamayor.com



TECHNICAL INFORMATION | INFORMACIÓN TÉCNICA

 Customized designed substructure Subestructura especialmente diseñada	 Impact strenght Resistencia al impacto	EN ISO 10545-5 ✓	 Dimensional tolerance Tolerancia dimensional	EN ISO 10545-2 ✓
 Profiles with hollow chambers Perfiles con cámaras huecas	 Water absorption Absorción de agua	0,5% <- < 4% 2% <- < 7%	 Thermal expansion Dilatación térmica	✓
 Wide range of formats Amplia gama de formatos	 Frost resistance Resistencia a la helada	EN ISO 10545-12 ✓	 Bending strenght Resistencia a la flexión	EN ISO 10545-4 >17N / mm²
 Glazed and antural colours Colores naturales y esmaltados	 Thermal shock resistance Resistencia al choque térmico	EN ISO 10545-9 ✓		



CERÁMICA MAYOR, S.A.

Dirección: Partida Planet, s/n. Callosa d'en Sarrià, Alicante, España (03510)

Centro logístico: Polígono Industrial Supoi 8, Av. Boverot, 12, 12550 Almassora, Castellón

Teléfono: +34 965 881 175

Web: www.ceramicamayor.com

e-mail: info@ceramicamayor.com

Cerámica Mayor se reserva el derecho de hacer las modificaciones que considere oportunas. Los productos están en continuo desarrollo por lo que pueden tener modificaciones en las especificaciones técnicas. Debido a los procesos de impresión, los colores que aparecen en este catálogo deben considerarse aproximados, no exactos. Toda la información de este catálogo está protegida por copyright. Está prohibida la reproducción total o parcial de los textos, imágenes y representaciones gráficas sin la autorización expresa de Cerámica Mayor.

tempio®

VENTILATED FAÇADES
FACHADAS VENTILADAS

EDITION - 2023



CERÁMICA MAYOR, S.A.
Partida Planet, s/n. 03510 Callosa d'En Sarrià (Alicante-España)
T+34 965 881 175 | www.ceramicamayor.com



www.tempio.es